

Mae marchnad y dref yn enwog am ei gwasanaeth cwsmeriaid croesawgar a chyfeillgar a'i dewis helaeth. Mae'n lle diddorol iawn sy'n cynnig cyfuniad o nwyddau traddodiadol a newydd.

Mae'r lle yn llawn diwylliant lleol, stondinau diddorol, defnyddiol a rhesymol eu pris. Gall siopwyr fanteisio ar y dewis a'r amrywiaeth enfawr o nwyddau sy'n cael eu cynnig yma.

Peidiwch ag oedi-dewch i weld beth sydd gan farchnad Llanelli a'r cyffiniau i'w gynnig i chi heddiw.

Be sy' mlaen

Rydym yn cynnal nifer o ddigwyddiadau drwy gydol y flwyddyn ar ddiwrnodau marchnad. I gael rhagor o wybodaeth, ewch i'n gwefan:

www.marchnadoeddsirgaerfyrddin.co.uk



Dydd Gwyl Dewi
St David's Day



Ymweliadau Ysgolion
School Visits



Cystadleuaeth Ysgolion
School Competition

Famed for its inviting and friendly customer service and with so much to choose from, Llanelli market offers a fascinating place with a mix of the traditional and new. Overflowing with local culture, reasonably priced, interesting and useful stalls, you can take advantage of the enormous variety and choice on offer.

Don't delay, come and see what Llanelli's market and precincts have on offer for you today.

What's On

We hold a number of events throughout the year on market days. To find out more please visit our website www.carmarthenshiremarkets.co.uk



Ble i ddod o hyd i ni ... Where to find us...

Marchnad Dan Do

Indoor Market



Yr maes parcio agosaf yw y maes parcio aml-lawr ar Stryd Murray

The nearest car park is the multi storey car park off Murray Street

Dewch draw i ymweld a'r Farchnad leol ORIAU AGOR:

Dydd Llun - Dydd Sadwrn 8:30am - 5pm
Mae gan masnachwyr unigol oriau eu hun

Roedd yr holl wybodaeth yn gywir adeg ei hargraffu - mis Hydref 2015

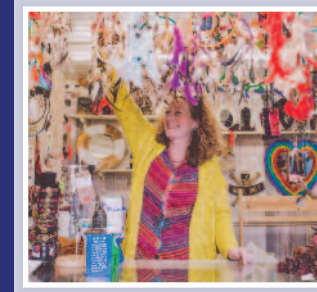
Come along and visit the local Market

OPENING HOURS:

Monday - Saturday 8:30am - 5pm
Individual traders have their own opening times

All information correct at the time of going to print - October 2015

MARCHNAD Llanelli MARKET

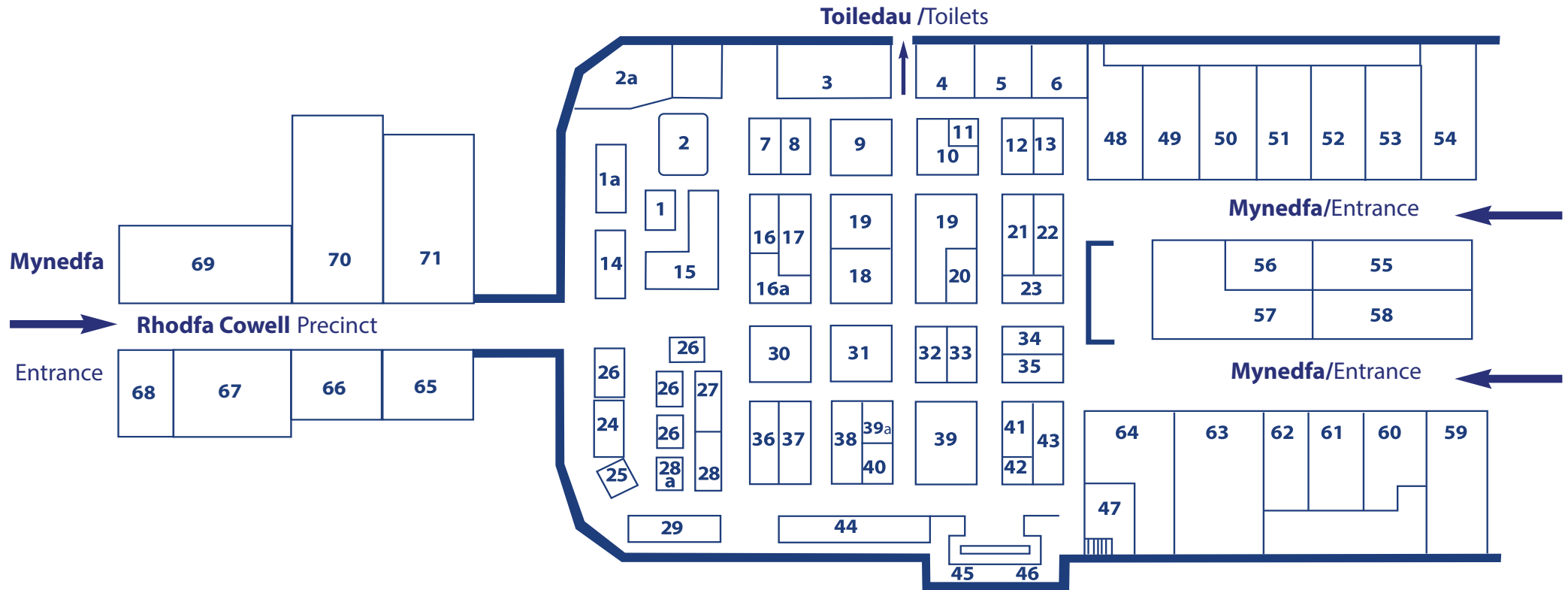


Eich Marchnad leol  Your local Market
Calon y dref  Heart of the town



Cyngor Sir Gâr
Carmarthenshire
County Council

www.marchnadoeddsirgaerfyrddin.co.uk
www.carmarthenshiremarkets.co.uk



- | | | | | | |
|-----------------------------|-------------------------------|--|------------------------------|--------------------------------|---------------------------------|
| 1 AJ Meats | 12 Top to Toes | 24 Sandwich Bar | 36 Named & Framed | 49 Sheer Style | 62 Celtic Café |
| 1a M2M Clothing Alterations | 13 T Singh Mobile Phones | 25 Vacant | 37 Antiques Past & Present | 50 Peruse | 63 Elizabeth Bennett Herbalists |
| 2 AJ Meats | 14 Seward's Florists | 26 Phillips Flowers, fruit & veg | 38 Vacant | 51 Beale's Linens | 64 Finale |
| 2a M2M Clothing Alterations | 15 Seward's Florists | 27 Penclawdd cockles & laverbread shell fish | 39 Cards R Us | 52 George Lewis, General Store | 65 D&A Heel Bar |
| 3 Retrobuton | 16 Lavender Cauldron | 28 Quality Kitchens | 39a Staggy's Gothic Clothing | 53 Jenkins Ltd | 66 Lush Bubbles |
| 4 Kathrin's Ladies stylist | 16a Seward's Fruit & Veg | 28a Vacant | 40 Vacant | 54 Welsh Shop | 67 Get Nailed |
| 5 Kleenwell Electrical | 17 Smoker's angel | 29 Vacant | 41 IC Records | 55 Sweet Things | 68 Verve Café |
| 6 Welsh Burger Company | 18 George Lewis, Toys & Games | 30 Angharad's Barber Shop | 42 D&D Children's Clothing | 56 Blodau Elli | 69 The Travel House |
| 7 Abel Vapours | 19 P Fashions | 31 Bwyd Blasus | 43 Dew Cosmetics | 57 The Teapot Café | 70 Claire Adams Schoolwear |
| 8 V Frost Newsagents | 20 Leatherline | 32 Gemini, Jewellery | 44 Y Gegin Fach | 58 S Glarvey, Carpets & Rugs | 71 Smokers Angel |
| 9 A Frost Toys | 21 Pandora's Box | 33 CJ's Balloons | 45 Bwyd Blasus | 59 Bizy Fingers Sewing shop | |
| 10 Select Wool Shop | 22 Card World | 34 AJ Meats | 46 Garrett's Fresh Seafoods | 60 Taffy's Barbers | |
| 11 Maureen's Flowers | 23 Sham Computers | 35 Welsh Maid Products | 47 Market Office | 61 Little Steps Boutique | |